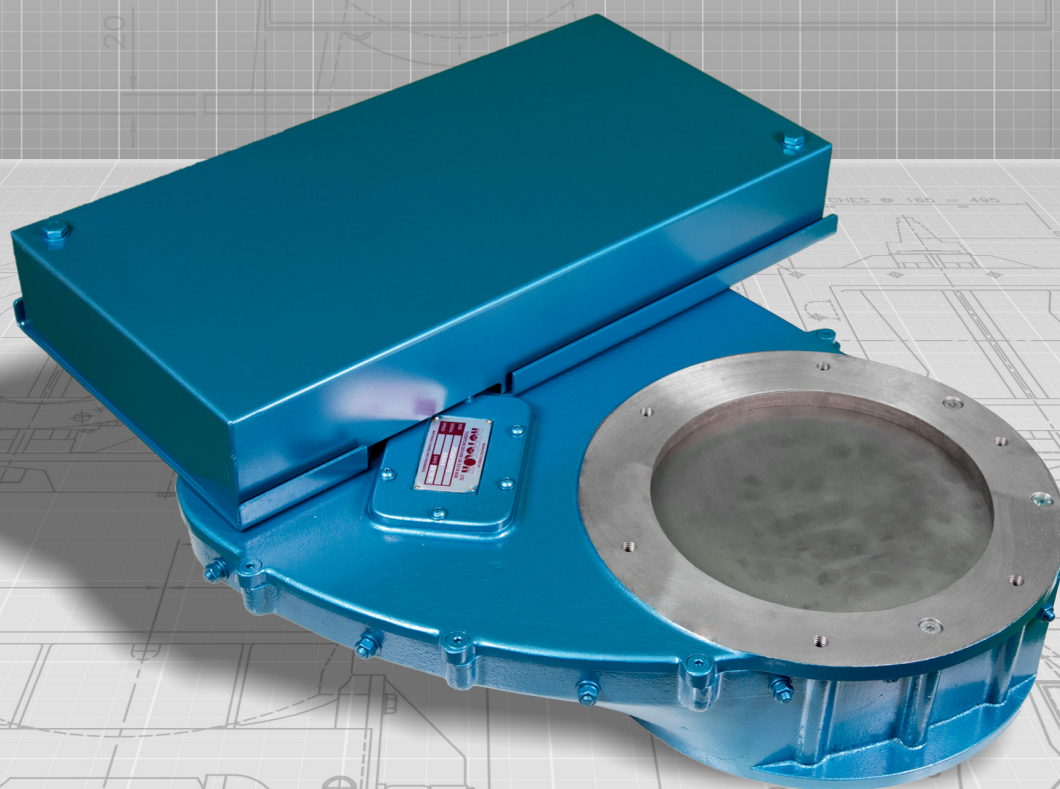




everything under control...



ROTOLOK UK

1 Millennium Place
Tiverton Business Park
Tiverton
Devon
EX16 6SB
United Kingdom
Tel: +44 (0) 1884 232232
Fax: +44 (0) 1884 232200
www.rotolok.co.uk
sales@rotolok.co.uk



ROTOLOK ROTOSLIDE

INTRODUCTION

Slide Valves are used for controlling the flow of powders, pellets and granules from the inlets or outlets of equipment.

Rotolok have been making an extensive range of fabricated units to suit the general industrial fields and the Rotoslide, manufactured in cast aluminium with stainless steel trim, specifically caters for the food and chemical industries.

Manufactured in four basic sizes: 150, 200, 250 and 300mm of circular inlet design and of both manual and pneumatic versions.

SPECIFICATIONS

BODY
LM6 Cast Aluminium

SLIDE PLATE
Stainless Steel

SLIDE PLATE SUPPORT
Nylon studs supported by
Stainless Steel screws

HAND OPERATED
Positive easy action handle

PNEUMATIC VERSION
One double acting
cylinder rear clevis
mounted

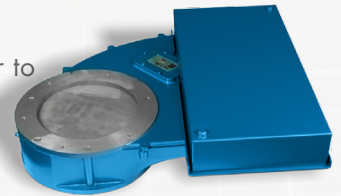
**SOLENOID VALVE
(PNEUMATIC ONLY)**
2 position 5 port single
solenoid spring return

LIMIT SWITCHES
Mounted to indicate open/
closed position.
Optional on manual version

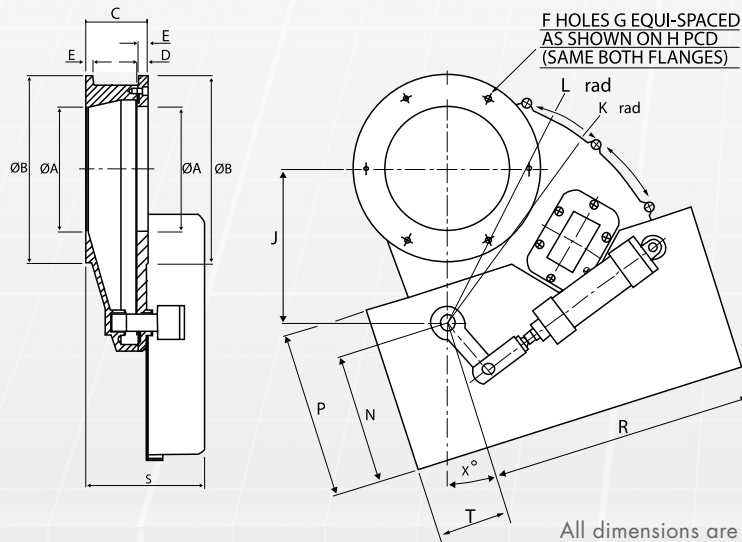
WHY ROTOSLIDE?

Rotolok's Rotoslide has a different concept than the majority of slide valves on the market, in as much that it is truly jamfree and, whether it is hand or pneumatically operated, the basic principal of using a pivot holds the slide plate in a positive fixed position, while the slide extremity is supported by nylon studs on stainless steel pins.

The conventional slide of pushing a plate relies on exact centralisation of the cylinder to ensure the plate does not veer to the side causing jamming, the Rotoslide overcomes this impracticality. It has been designed to meet the health and safety acts requirements of the slide always bring completed enveloped, enclosed and dust tight to the surrounding environment.



ROTOSLIDE



All dimensions are in mm unless otherwise stated

SIZES	A	B	C	D	E	F	G	H	J	K	L	N	P	R	S	T	X°
150	150	230	98	16	12	6	M10	195	162	254	268	220	267	425	197	115	0°
200	200	300	98	16	12	6	M12	260	245	365	380	208	266	425	197	115	17.5°
250	250	350	125	16	12	6	M12	310	316	460	474	245	316	440	224	170	17.5°
300	300	400	125	16	14	8	M12	360	398	566	580	245	316	440	224	170	15°

Dimensions are approximate and subject to change without notice
Planning-in detail for general guidance only
(To cover safety aspects ask for our safety leaflets)
Drillings are Rotolok standards. Variations can be made.



www.ROTOLOK.co.uk