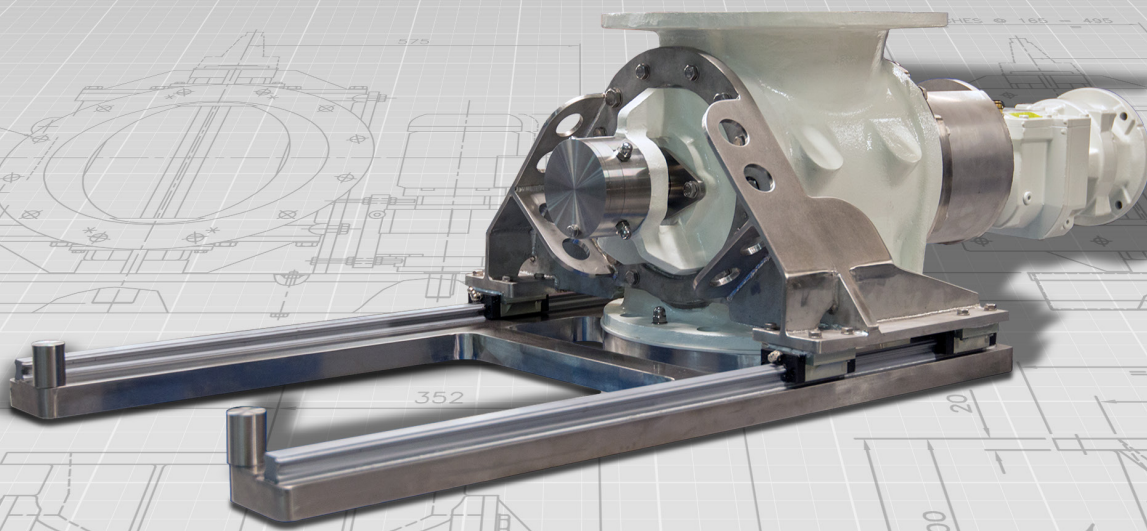




everything under control...



ROTOLOK AUSTRALIA PTY LIMITED

Unit 1
6 Bonz Place
Seven Hills
Sydney NSW 2147
Australia

Tel: +61 2 9620 4735
Fax: +61 2 9620 4751
www.rotolok.com.au
sales@rotolok.com.au



ROTOLOK USDA ROTARY VALVE

INTRODUCTION

Here at Rotolok, we constantly strive to improve the quality of our equipment and obtain the required and industry recognized certification to provide specialist valves. In February 2018, Rotolok gained approval and certification from the United States Department of Agriculture (USDA) to supply Rotary Valves for use in the dairy, food and chemical industries in the United States.

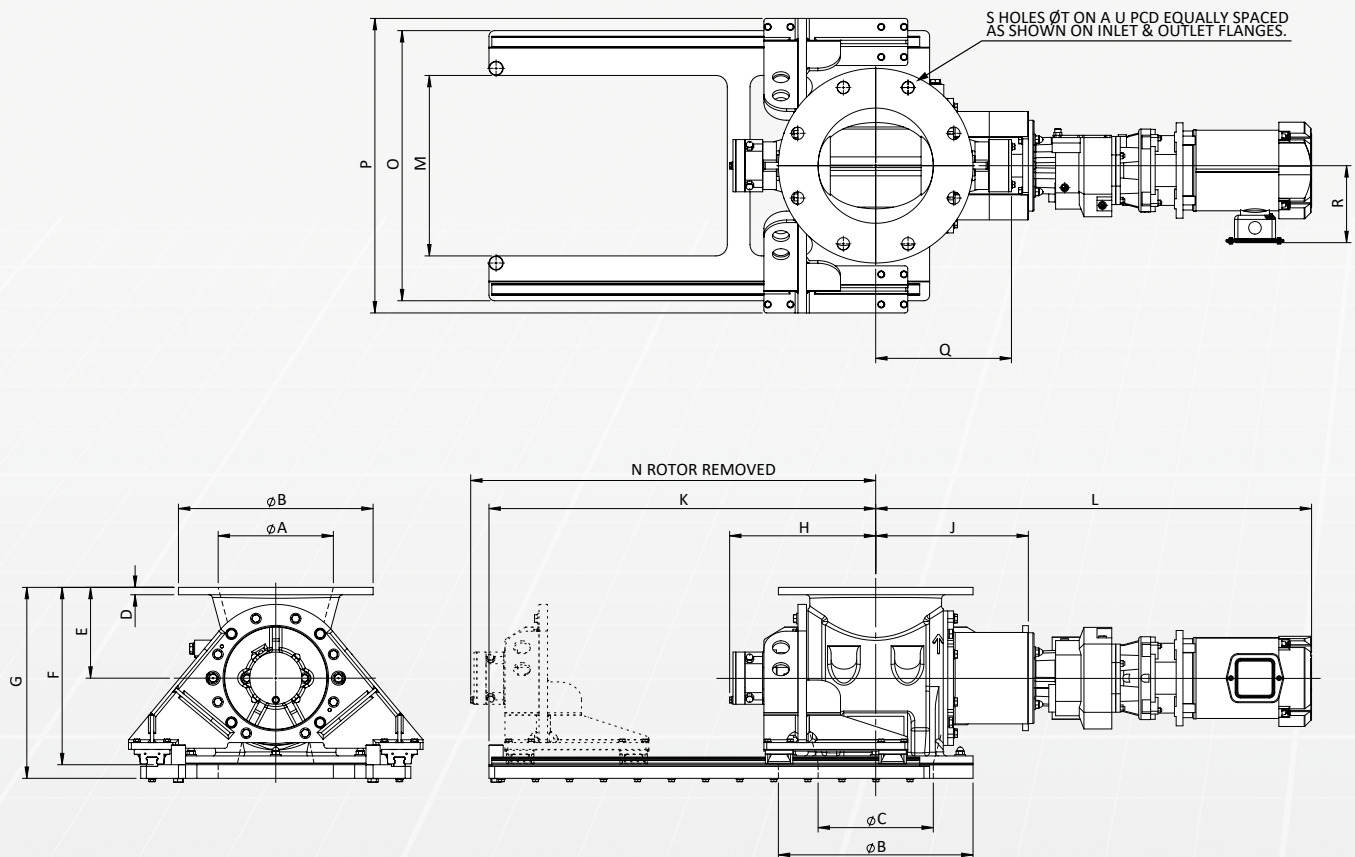
Rotolok's USDA Dairy Accepted line of Rotary Valves are designed for use in sanitary applications in the food, dairy, pharmaceutical and chemical industries where regular cleaning is required to prevent product contamination.

VALVE CONSTRUCTION

The product contact surfaces of the valve are manufactured in 316 Stainless Steel and polished to a 150 grit finish, ensuring that there are no lodgement points allowing the product to flow smoothly. Furthermore, the valve is equipped with a slide rail mechanism allowing for the quick and easy removal of the rotor from the valve body. This addition substantially reduces the amount of downtime and the number of man hours required for the cleaning and maintenance of the rotor and valve internals.

Our USDA certified Rotary Valves are available in sizes ranging from 150mm up to 400mm.

USDA VALVE DIAGRAM



*All dimensions are in millimetres unless stated otherwise.

SIZE	ØA	ØB	ØC	D	E	F	G	H	J	K	L	M	N	O	P	Q	R	S	ØT	U
150	154	285	152	12	140	273	296	228	257	579	742	262	625	420	463	214	140	8	22	241
200	203	343	203	13	160	313	337	257	269	682	768	318	734	476	519	239	140	8	22	298
250	254	406	254	15	200	383	407	282	309	767	921	381	810	539	582	269	140	12	25	362
300	305	483	305	19	240	468	498	316	344	868	956	450	910	608	651	300	140	12	25	432
350	356	533	356	19	270	523	553	326	354	878	966	502	920	660	703	310	140	12	28	476
400	406	597	406	20	300	583	620	392	421	1031	1061	380	1090	722	765	378	140	16	28	540

Dimensions are approximate and subject to change without notice
Planning-in detail for general guidance only
(To cover safety aspects ask for our safety leaflets)
Drillings are Rotolok standards. Variations can be made.